

sage 300c







# Sage 300c

## See your business in a new way

Sage 300c brings data visibility and real-time access across an entire business without the costs or complexity of traditional enterprise resource planning (ERP) software. Whether you are operating from one location or multiple locations around the world, Sage 300c can easily manage your finances, operations and inventory, source, and report on your key performance indicators. Sage 300c allows you to:

- Break down departmental silos for companywide transparency and improved collaboration.
- Tap into a real-time, unified view of your company's finances and operations.
- Reduce inefficiencies and redundancies so you can optimise company performance, productivity.
- Integrate front-to-back-office processes such as marketing, sales, and customer service.
- Work anywhere and anytime.

---

### **Anytime, anywhere mobile access**

Sage 300c offers anytime, anywhere, and any-device access to business and transactional data, critical to supporting an increasingly mobile and geographically dispersed business.







## What is Sage 300c?

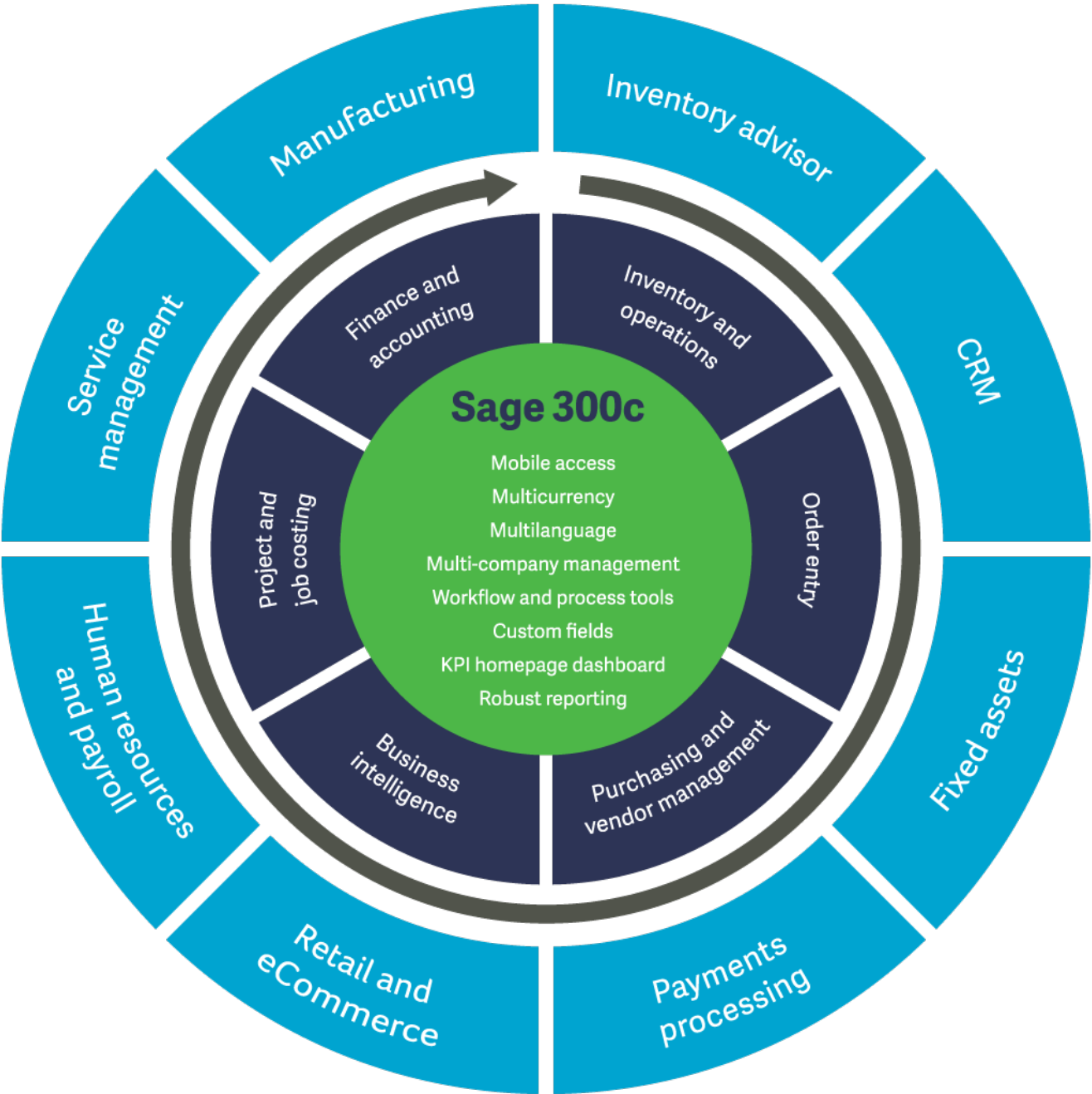
We are reimagining business by making your lives simpler and allowing you to unleash the power of accessing information from anywhere. The latest version of Sage 300 offers new features and an enhanced user experience with the new browser-based version called Sage 300c.

Sage 300c is the next generation of Sage 300 that’s simply re-imagined to fit a modern web environment. The preferred solution for tens of thousands of companies across the globe, Sage 300c connects the most important aspects of your growing business,including:

- Financials.
- Operations and inventory.
- Project and vendor management.
- Business Intelligence and Reporting.
- Sales, marketing, and customer service.

The advantages keep coming. Sage has an extensive network of Independent Software Vendors whose add-on solutions extend Sage 300c ever further to meet the specialised needs of your business.

Imagine a world where your business can process orders, fulfill orders on time, make and accept payments, reconcile your books across multiple companies and currencies, pay employees, and manage projects, all with one trusted solution. Welcome to Sage 300c.









“One thing that [Sage 300] does particularly well is give us the real-time inventory numbers we need to make informed day-to-day decisions.”

Allan Schmidt, president, Vineland Estates Winery

“For our advisers, all the client information can be found in one spot. They can see all areas of the business. We’ve managed to reduce duplication and inconsistencies by getting rid of multiple client databases.”

Andrew McPhillips, Chief Technology Officer, Dixon Advisory

## Ship orders on time, manage inventory across multiple locations

With Sage 300c, you’ll delight customers, vendors, and your own employees by integrating disparate processes across multiple warehouses, inventory, production, and service departments. Faster, more accurate fulfillment results in satisfied customers, quicker payments, and much greater profitability.

### Efficiently manage your inventory

Assert control over your inventory processes and reduce carrying costs while delivering orders on time. With Sage 300c, you can easily take charge of inventory receipts, shipments, returns, and adjustments with multilocation inventory tracking capabilities.

With easily accessible, real time information, make better business decisions regarding what merchandise to stock, pricing, discontinued items, and trend analysis to best determine what’s selling and what to market.

Sage 300c offers real-time visibility to inventory data including receipt, shipping information, returns, disposition of goods, and precise value. It also allows you to obtain detailed, current inventory information on demand.

### Optimise your stock levels

Sage Inventory Advisor\* provides you with an inventory health check, produces quality forecasts, reduces the time spent on manual tasks, and determines the optimal investment needed to achieve target fill rates. It’s optimal for companies with one or more warehouses and 1,000+ SKUs.

### Strategically manage every aspect of the distribution cycle with efficiency and control.

- Inventory control, forecasting, and optimisation
- Serialised inventory and lot tracking
- Purchase Order
- Order Entry
- Credit Card Processing

\*Sage Inventory Advisor is an add-on solution to Sage 300c.

### Streamline order and shipping processes

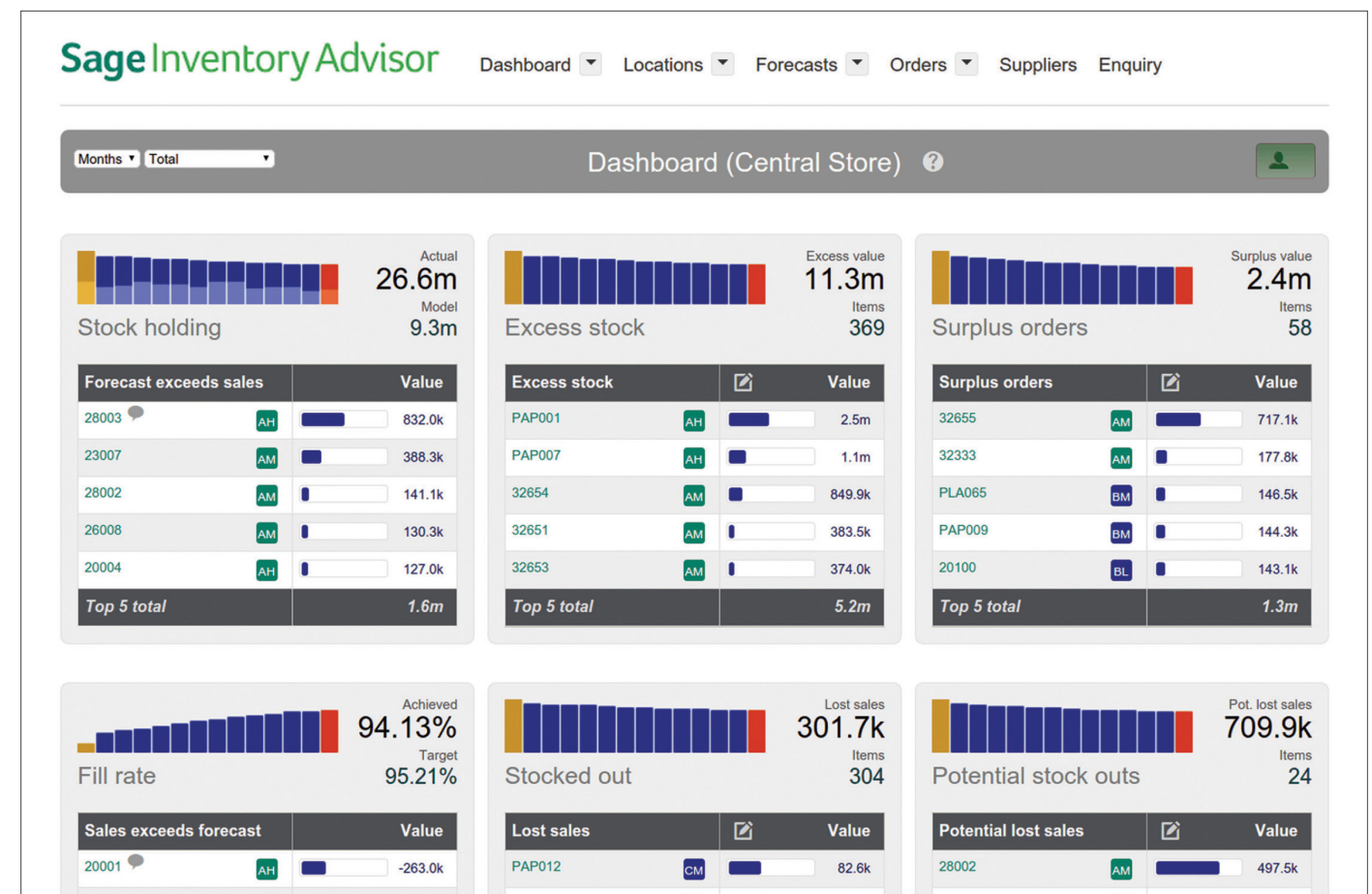
Are your accounting or customer service teams overwhelmed with questions on shipment status, billing, item availability, or returns? Are they tracking orders manually and relying on shop-floor or warehouse staff to determine what’s in stock and what can be shipped?

With Sage 300c, your employees will be continuously aware of inventory levels and customer account changes such as alternative items. You will eliminate redundant data entry and automate workflow as well as:

- Set up detailed quotes, back orders, cancellations, shipments, and prepayments.
- Establish data-entry defaults so you can see customer information quickly.
- Gain real-time insight into stock levels, customer details, and shipping information.
- See and enter orders in the currency of your customers.
- View or print reports of transaction details and sales information.
- Track multiple payment schedules and other payment terms

### Strengthen vendor relationships, interaction with streamlined purchasing

Make the right decisions sooner by automating — and adding visibility — to every facet of your purchasing process. Sage 300c keeps you in sync across process requisitions, purchase orders, receipts, invoices, and returns to save you time. All that transparency means everyone works from the same, real-time intelligence. What better way to keep building stronger relationships with your vendors?





*"We wanted a fully integrated system rather than a CRM system bolted on to a finance system as integration would make it easier and faster for the commercial team."*

Jeremy Kann, General Manager, Australian Grand Prix

## Effectively manage projects and track job costs

Keep projects on schedule and on budget with flexible estimating, tracking, and project billing in Sage 300c.

With Sage 300c project job costing, you're better equipped to:

- Control project costs.
- Manage contractors and subcontractors.
- Track costs and revenue down to the finest details on every project.
- Track and monitor original projections and actuals.

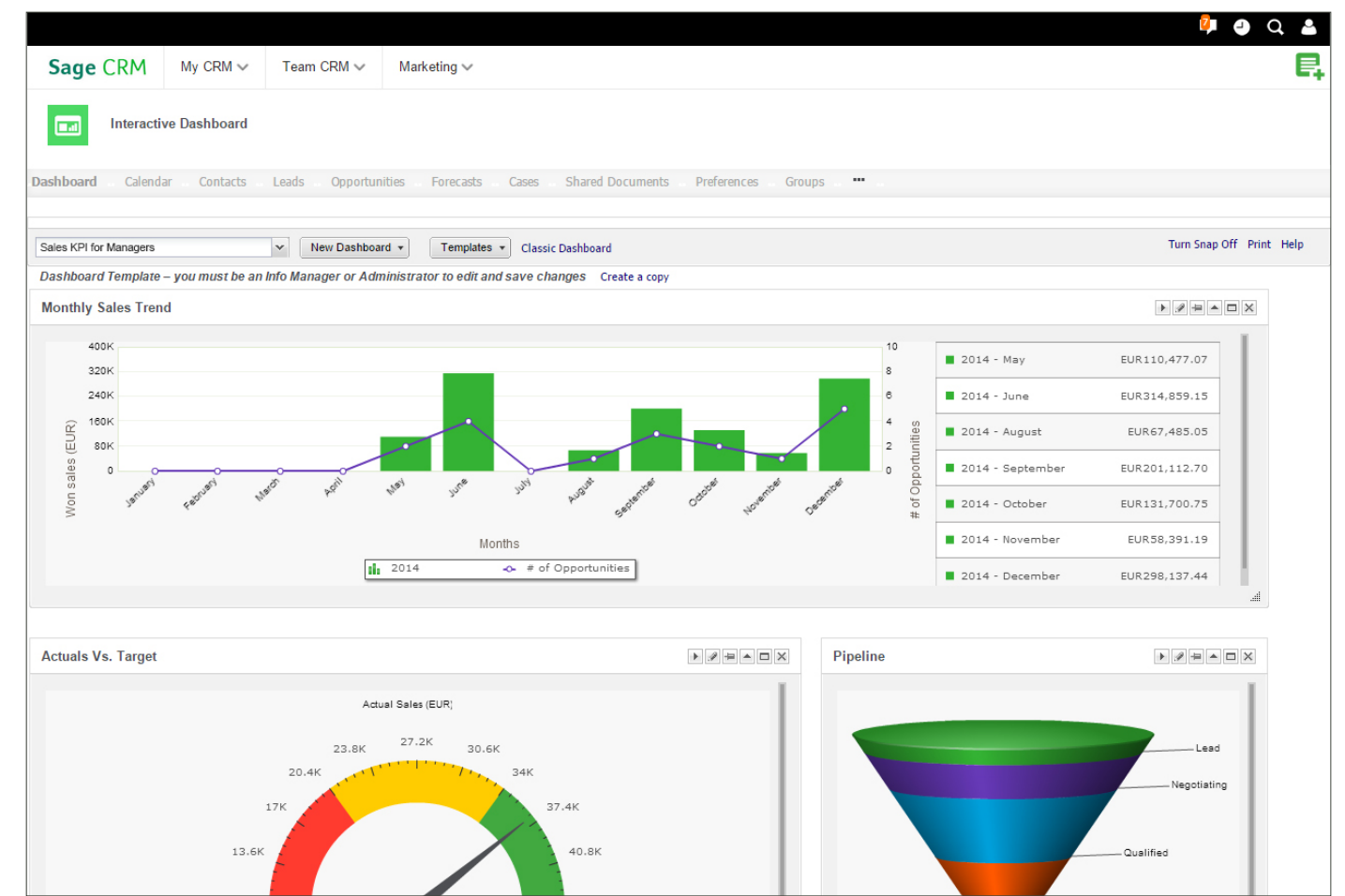
All costs, payables, and receivables can roll up to each area of the project. Overhead, equipment, and materials are allocated to ensure the project is on time and on budget.

## Win new business, retain and grow existing customer business

With Sage 300c and Sage CRM, you can have end-to-end visibility of your sales and marketing activities and a single view of the customer across your organisation. Open up new opportunities for growth with greater insight into business performance, better efficiency and productivity, and more effective communications.

You have the tools at your fingertips to find new customers, reduce sales cycles, and build lasting, more profitable relationships.

- Track your sales opportunities from lead generation to close.
- Exceed your customers' expectations with outstanding customer service and support.
- Plan, execute, and evaluate the success of your marketing campaigns with ease.
- Enable your workforce to access customer information anytime, anywhere with mobile access.







*“The senior management team now have more insightful information on which to base critical business decisions.”*

Ayda Hornak, Infrastructure and Innovation Manager, Waivestar

## Gain better visibility to make fast, effective decisions

With a 360-degree view of your business, real-time metrics, and the ability to create personalised dashboards and meaningful reports, you gain live visibility across all departments and companies with Sage 300c business intelligence tools.

### Enhance business insight and visibility

Reporting on the most critical aspects of your business — on demand — is critical to operations, management, and compliance. With Sage 300c, you will be able to identify issues before they become major problems for your business.

### See everything in real time

The most important key performance indicators are available on the Sage 300c homepage, giving you an up-to-the-moment overview of your financial and operational performance every time you log on.

- Review real-time metrics and create personalised dashboards.
- Distribute reports with calculated values or embedded formulas—allowing for quick analysis.
- Use prebuilt templates to report on any critical aspect of your company.

With Sage 300c, you’ll have critical information at your fingertips for easier, smarter short- and long-term planning. You can leverage widgets and customisable report templates to report on any critical aspect of your company, so you can properly allocate your resources and increase productivity.

### Intelligent reporting

Design, generate, and distribute reports through a common Microsoft Excel® interface on financial and nonfinancial data. Analyse and create reports, filter and aggregate data, drill down to transactions, and automatically schedule and distribute reports. Sage Intelligence has multiple report templates that are provided out of the box.

- Use drag-and-drop formulas to easily create and manage your financial reporting.
- Develop in-depth financial, operational, customer, and vendor reports.
- Effortlessly consolidate data from multiple companies, divisions, and databases.

\*Sage Enterprise Intelligence is an add-on solution to Sage 300c.

### Improve decision making process using self-service analytics

An innovative and self-service business intelligence solution, Sage Enterprise Intelligence\* is engineered for ease of use and performance. Sage Enterprise Intelligence’s intuitive web user interface and advanced features provide instant access to enterprise-wide information, quickly and securely.

- Immediate access to real-time enterprise information from mobile devices.
- Simplify and accelerate the distribution of relevant information across your organisation.
- Empower any user to analyse and report on financial and operational data.







*“The solution is an integral part of our business now, with the bulk of our customers ordering online.”*

Jeremy Brown, Director, Micro Mobility

## Solve industry specific challenges using Sage 300c’s extended solutions

Designed for ease of use and low total cost of ownership, Sage 300c is an highly functional end-to-end business solution that offers a range of industry specific solutions. Sage 300c connects your entire operation with a single, integrated solution that provides you with greater visibility, making it easier to share information and communicate. Below are some of the extended solutions\* of Sage 300c.



### **Service Manager, Powered by Technisoft**

For service-based businesses, the key to success is a streamlined and efficient call centre that presents all the information quickly to your staff when they need it. Sage 300c enables customer information to flow throughout the business – from the call centre to the technicians on the road and ultimately to the customer.

Make your service and maintenance resources work harder with true, centralised accountability that helps you manage the resources, products and services your business offers. Access your data locally or from the field using mobile or web technologies to save time, lower expenses, monitor profitability, increase productivity and most importantly, improve customer satisfaction.

### **Manufacturing Management, Powered by AutoSimply**

Manufacturing Management by AutoSimply is a complete manufacturing solution fully integrated with the financial and operational modules of Sage 300. It enables efficient manufacturing operation flow covering material purchase, processing manufacturing orders, work-in-progress, routing cost calculation, material consumption, material scrap and item substitution and order closeout.

- Multi-level BOM structure
- Link your manufacturing orders to open sales orders or purchase orders
- Easy-to-use production scheduling and material requirement planning solution
- Generate full scale purchasing plans for all inventory items

### **Retail Management by InfoCentral**

Sage 300c offers retailers extensive functionality and customisation options to meet their individual operational and accounting requirements. Retail Management by InfoCentral is a fully featured Point of Sale solution that offers tremendous flexibility and enables retailers to customise the system to best suit their requirements.

- Create customers, record customers sales, customer specific promotions, pricing, discounts and much more
- Multiple units of measure with unique unit of measure barcodes
- Item lookup, location balances and unlimited types of inventory adjustments

\*available as 3rd party add-ons.





PO Box: 390143, Office No. 3304, JBC 2 - Cluster V, Jumeirah Lake Towers, Dubai, UAE.  
Email: [info@vernus.ae](mailto:info@vernus.ae) | Phone: +971 4 5539928, +971 588313654